

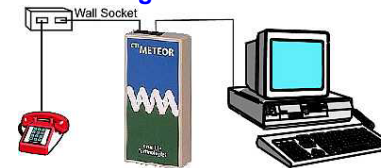
Equinox

Installation Guide

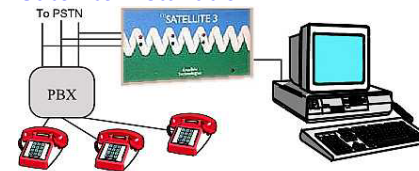
Hardware Installation

1. Plug the RS232 (serial) cable into the caller display product and into a free COM port on the PC.
2. Connect the telephone line cord from the hardware to the telephone socket.
3. If you have purchased Hardware for recording, plug the 3.5mm jack plug into the Microphone socket on the PC.

Meteor/Pegasus Installation



Satellite Installation



The hardware must be connected before any PBX or other telephone system. Connection should be to the main BT sockets, not the extension sockets. The caller ID information will not pass through a standard PBX system.

LED Status

When Equinox is running the LED displays on the hardware convey the following information. On the end of the Meteor and on the front of the Satellite are Red and Green LED's, they indicate the status of the system.

The Red LED is on steady when the line is idle and flashes when the line is in use.

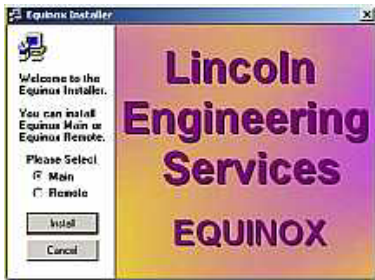
The Green LED flashes whenever data is sent to the PC.

Satellite only - the Red LED at the bottom right indicates that the unit is connected to the PC and the COM port is enabled.

Software Installation

Note: If you are upgrading from an earlier version and wish to keep your files, Database etc use Add/Remove programs and uninstall your earlier version. Your original files will not be deleted. Install your new version to the same folder that the original installation was in.

Insert the CD into your CD/DVD reader; the installer will start after a few seconds.



Choose to install Equinox Main or Equinox Remote. A Main (Server) installation is on the PC which has the hardware (Meteor, Pegasus or Satellite) connected. This must be the first installation. A Remote (Client) installation is on a PC connected to the computer network but not to the hardware device.

When the installer has finished go to Start/Programs/Equinox.

Vista users: Right click the Equinox icon, select properties. Click Advanced. Check the box 'Run as Administrator'. Click OK. Click Apply. Click OK. **Win7 users.** Right click the Equinox icon and select 'Run as Administrator'. **All users:** Click 'Equinox'. Equinox Setup will start.

Setup



If you need more information press F1 for Equinox help.

Click 'Next'.



Enter a registered user name and the serial number(s) of your Caller ID products. The serial number label is located on the bottom of each product. If only using 1 device enter the serial number in the serial port 'A' text box and leave the other empty.

Click 'Next'.



The serial number contains information that allows the model of the caller ID device to be determined. In this example a serial number for a Pegasus Plus was entered as serial A. No serial number was entered for serial B.

If the information is correct click 'Yes'.



The caller ID hardware device must be connected to a COM port, or via a USB to serial port adaptor if no COM port is available. Select the port from the list.

Click 'Next'.



This window will vary depending on which caller ID device you are using. Select 'All' to monitor all available lines. For a satellite 6, lines 1 to 6 could be selected. With 2 caller ID devices (2 X satellite 6) up to 12 lines can be monitored. Click 'Next'.



Enter your local area code and the other dialling codes you wish to use.

Click 'Next'.



When a call arrives or is made the Equinox window can be set to pop up. Use the 4 check boxes at the top to enable or disable this feature.

Click 'Next'.



Equinox can synchronise the PC to the service providers date and time so that the PC time is always correct.

Click 'Next'.



Equinox can be linked to an Ms Access or Ms Outlook database or use its own database. If you are unsure select Equinox. For more information about using databases press 'F1' for help.

Click 'Next'.



Setup is now complete.

Click 'Next', the main Equinox program will start.

Important: Equinox will cease to function 7 days after installation unless registered. To register: Select 'Help/About Equinox' from the menu bar. Click the 'Register' button. When asked if you have a registration number click 'No'. Enter your details in the form and Email it to the address shown. We will send you your registration details and instructions.